

**Life cycle of a midge:**



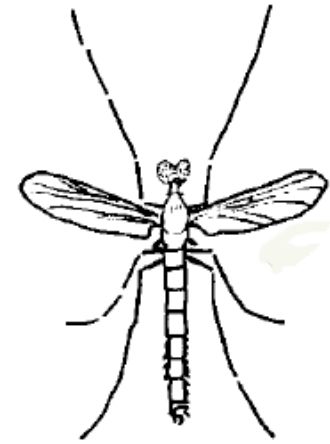
**egg**



**larva**



**pupa**

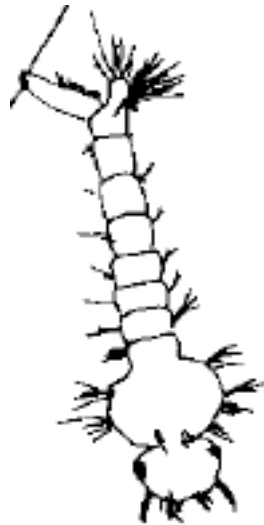


**adult**

**Life cycle of a mosquito:**



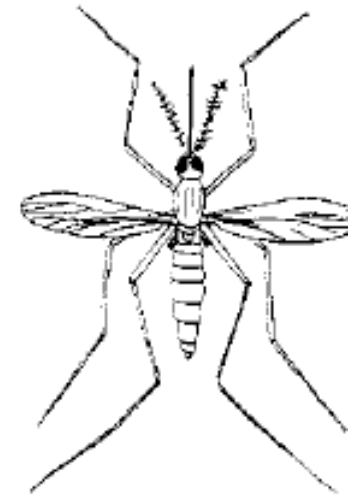
**egg**



**larva**



**pupa**



**adult**

Life cycle of a frog:



egg



tadpole



tadpole with two legs



adult

Life cycle of a crab:



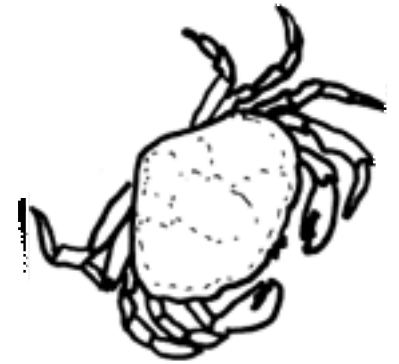
eggs



zoea

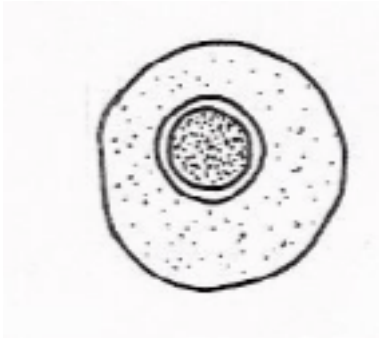


megalopa



adult

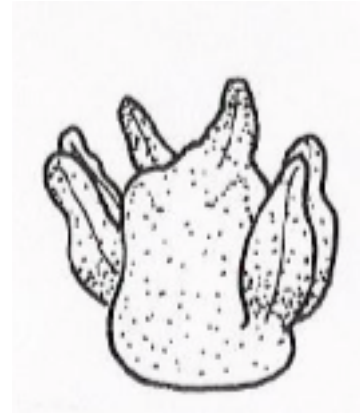
**Life cycle of a sea urchin:**



**egg**



**larval stage 1**



**larval stage 2**

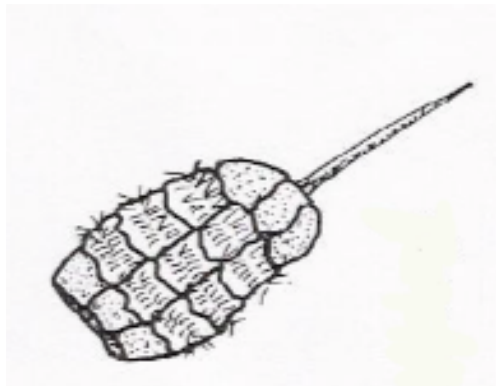


**adult**

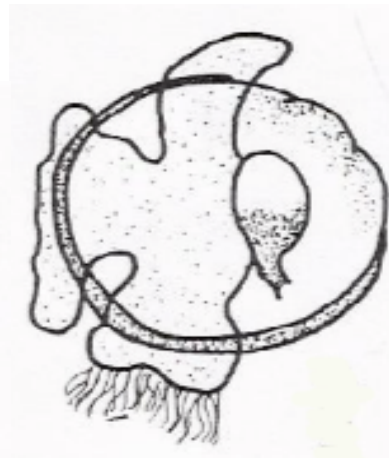
**Life cycle of a clam:**



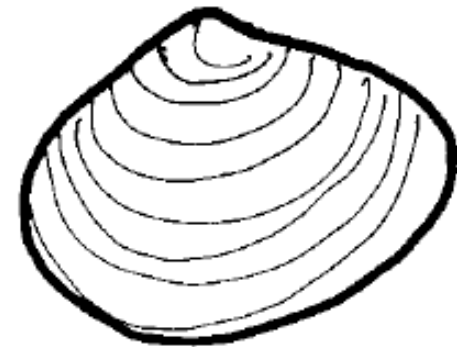
**Egg**



**larval stage 1**



**larval stage 2**



**adult**